

Technical Specification Sheet

DANIA CH II

DANIA CH II

single lever mixer



REGINOX

Specification

Finish	Polished Chrome
Body	Stainless Steel
Fitting	Deck Mounted
Connections	1/2" M10
Spout Rotation (°)	360

Dimensions

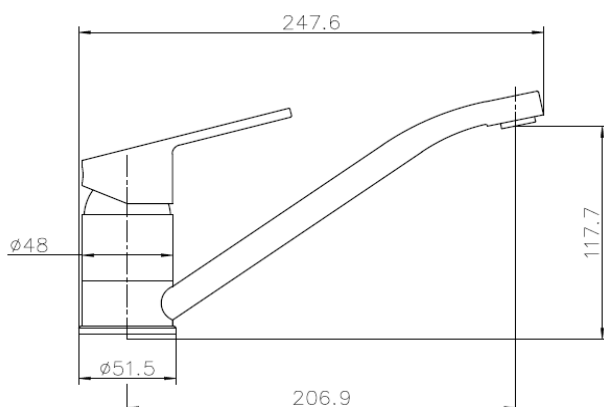
Tap Hole Size (mm)	35
Height (mm)	117.7
Base Width (mm)	51.5
Reach (mm)	247.6
Weight (kg)	0.7
Box Dimensions (mm)	300 x 130 x 65
Packed Weight (kg)	1.5

Bar Pressure

Minimum Pressure	0.5
Maximum Pressure	3
Maximum Temperature (°C)	60

Flow Rates

@ 0.5 bar	@ 1 bar	@ 3 bar
6.4	9.2	15.7



Additional Features/Benefits

Single Flow

Aerator included

Thread length is 50mm, It can manage 40mm worktops max

EAN

5060964933542

Warranty

10 Year Warranty (Casting) | 1 Year Warranty (Serviceable Parts)

Care & Maintenance

Reginox recommends cleaning your tap regularly with non-abrasive cleaners. Warm, soapy water would be best.

All pressures are in bar.
 Dimensions supplied are nominal and subject to tolerance.
 Inclusion of aerator (if supplied) or restrictors (supplied separately) will affect flow rate result.
 Performance details are based on trials under test conditions and are for guidance only,
 The manufacturer reserves the right to change product specification without prior notice.

Certifications

