

# TOWELRADS INDEPENDENT



The Independent range is a timeless classic which comes in a variety of widths & heights to suit all room sizes. With a reflective chrome finish to match taps & fittings, or white finish to keep a minimalist feel you can decide which colour best suits your interior. This towel rail is also dual fuel compatible, which gives you greater heating flexibility – particularly in summer for drying damp towels.

Safety tested at **13 bar pressure**.

Normal household pressure is well **under 5 bar**.



Manufacturers  
Warranty



Works with both central heating  
and electric fuel sources



Available in Chrome  
and White

## FEATURES AND BENEFITS

- Classic ladder style towel rail in ever-popular White RAL 9016 finish or stylish Chrome.
- Range includes all popular sizes.
- This product can also be fitted with an electric dual fuel element.

## INDEPENDENT CHROME

Height (mm)	Length (mm)	Pipe Centres (mm)	Product Code	Output at $\Delta T50k$	
				Watts	BTU
800	400	355	130037	192	655
	500	455	130043	227	774
	600	555	130049	263	897
1000	400	355	130038	238	812
	500	455	130044	283	965
	600	555	130050	329	1122
1200	400	355	130039	283	965
	500	455	130045	341	1163
	600	555	130051	398	1358
1400	400	355	130040	329	1122
	500	455	130046	400	1365
	600	555	130052	471	1607
1600	400	355	130041	376	1282
	500	455	130047	462	1576
	600	555	130053	547	1866
1800	400	355	130042	424	1446
	500	455	130048	526	1795
	600	555	130054	628	2143

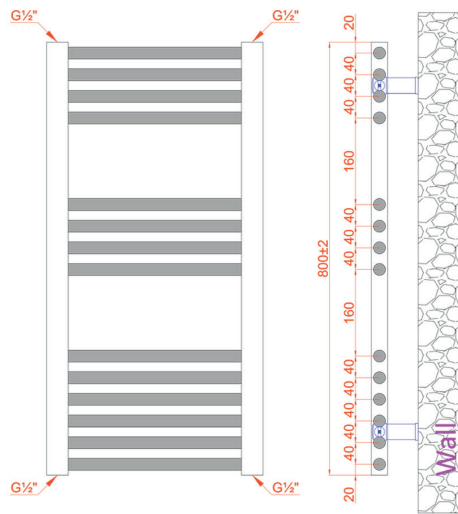
## INDEPENDENT WHITE

Height	Length	Pipe Centres (mm)	Product Code	Output at $\Delta T50k$	
				Watts	BTU
800	400	355	130001	297	1013
	500	455	130007	359	1224
	600	555	130013	424	1447
1000	400	355	130002	359	1225
	500	455	130008	429	1464
	600	555	130014	500	1706
1200	400	355	130003	424	1447
	500	455	130009	509	1737
	600	555	130015	594	2027
1400	400	355	130004	494	1685
	500	455	130010	594	2027
	600	555	130016	694	2368
1600	400	355	130005	570	1945
	500	455	130011	685	2337
	600	555	130017	800	2730
1800	400	355	130006	651	2221
	500	455	130012	782	2668
	600	555	130018	913	3115

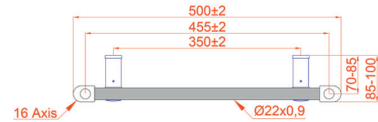
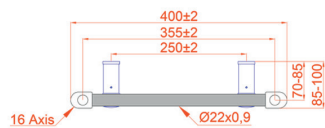
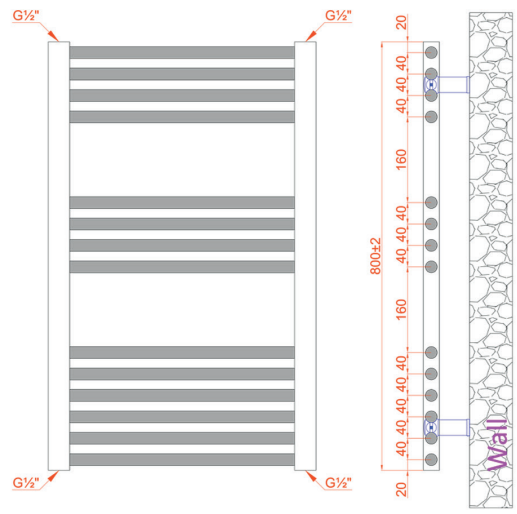
# TECHNICAL DIAGRAMS

## INDEPENDENT COLLECTION

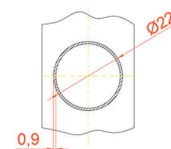
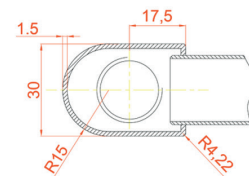
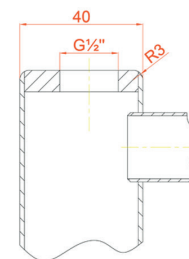
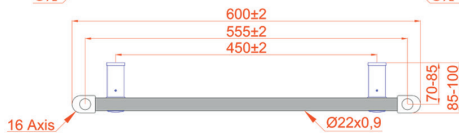
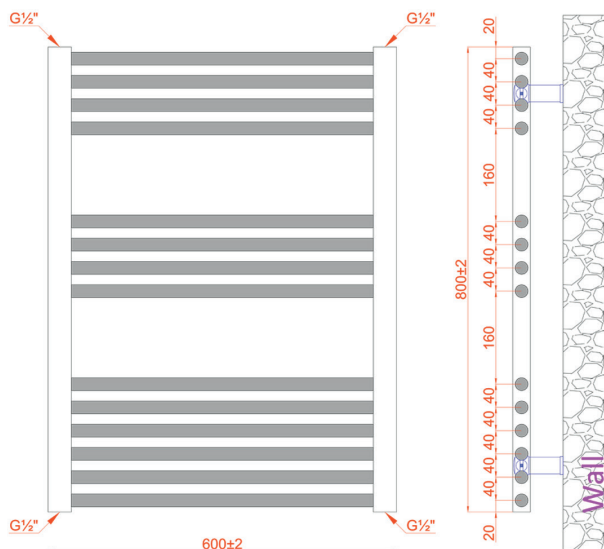
800x400MM  
CONFIGURATION



800x500MM  
CONFIGURATION



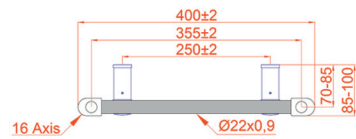
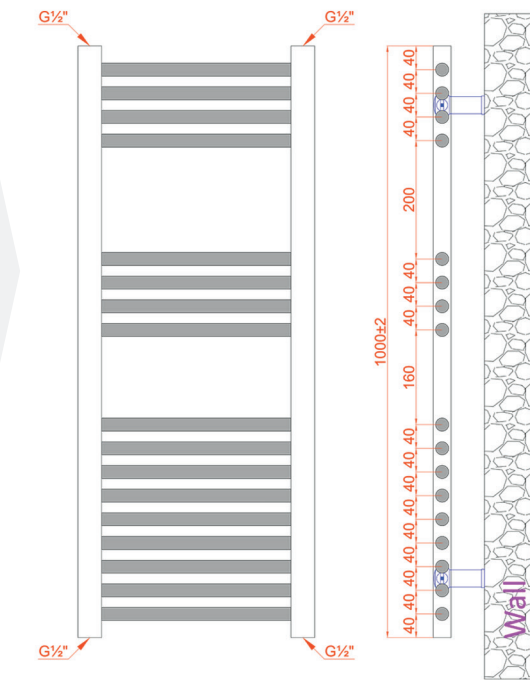
800x600MM  
CONFIGURATION



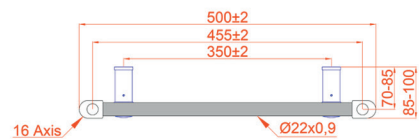
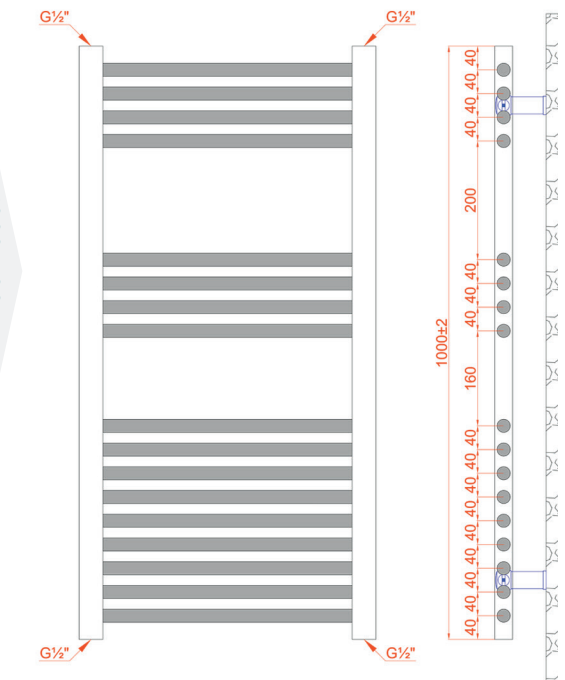
# TECHNICAL DIAGRAMS

## INDEPENDENT COLLECTION

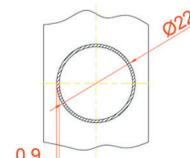
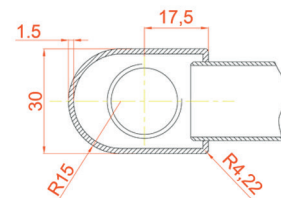
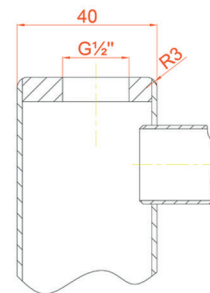
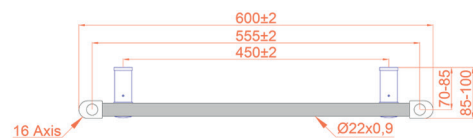
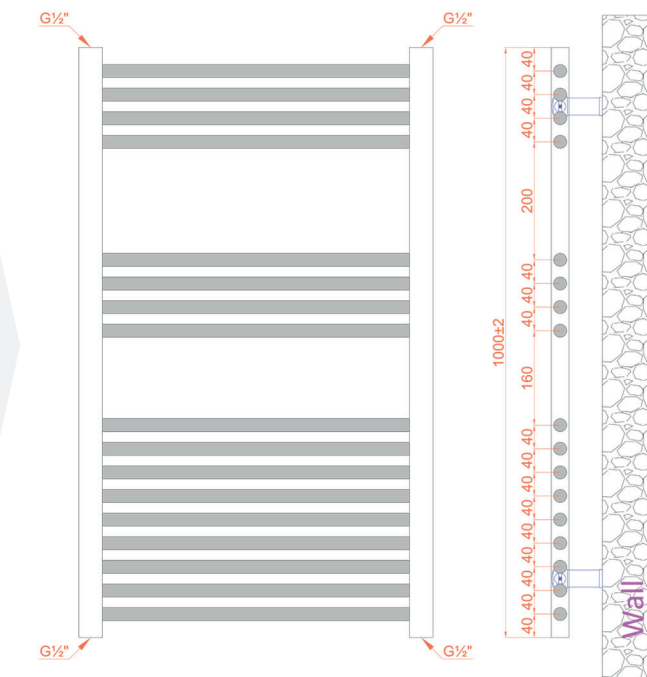
1000x400MM  
CONFIGURATION



1000x500MM  
CONFIGURATION



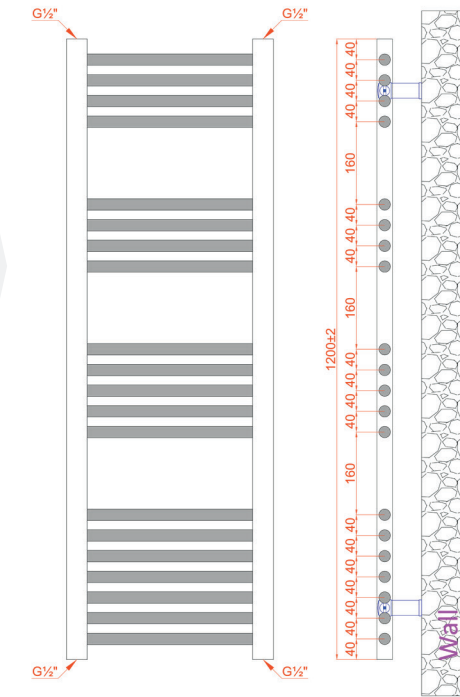
1000x600MM  
CONFIGURATION



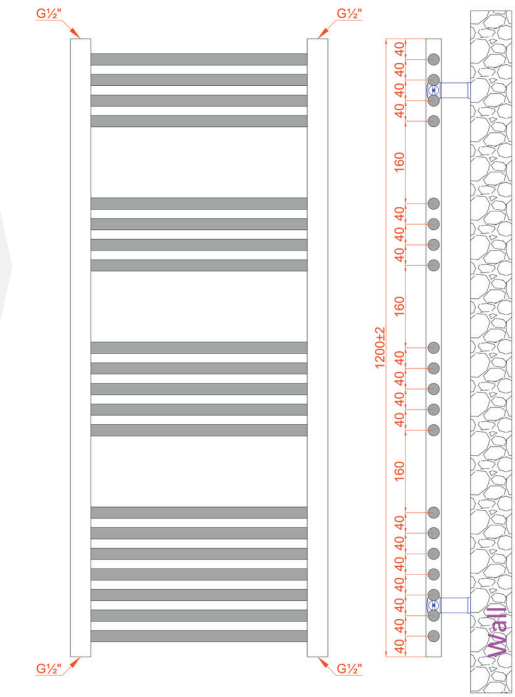
# TECHNICAL DIAGRAMS

## INDEPENDENT COLLECTION

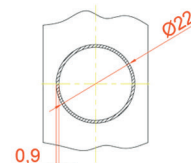
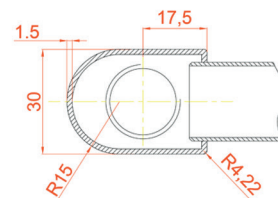
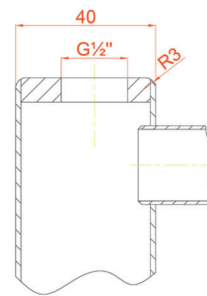
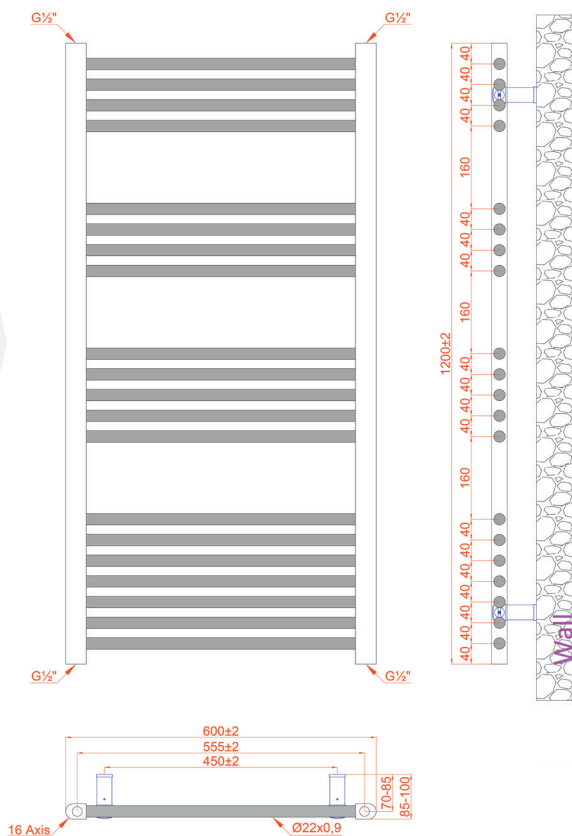
**1200x400MM**  
CONFIGURATION



**1200x500MM**  
CONFIGURATION



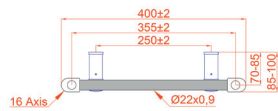
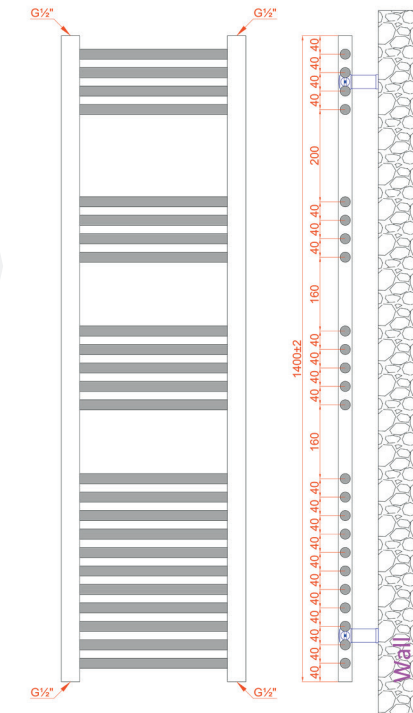
**1200x600MM**  
CONFIGURATION



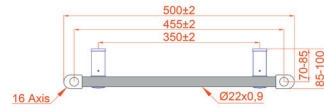
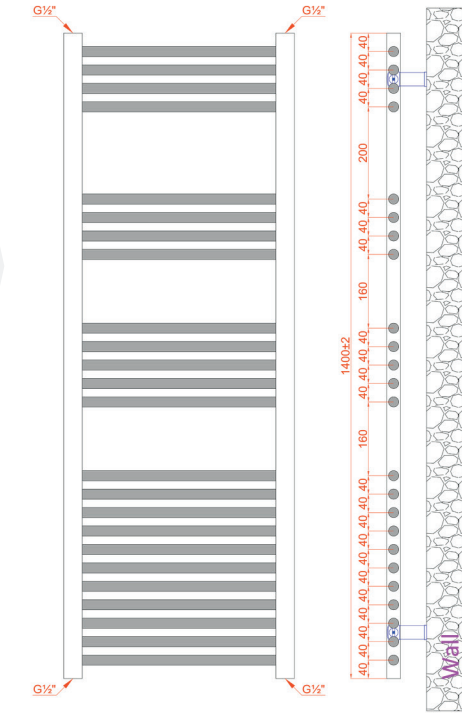
# TECHNICAL DIAGRAMS

## INDEPENDENT COLLECTION

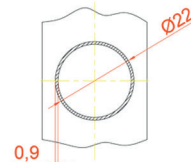
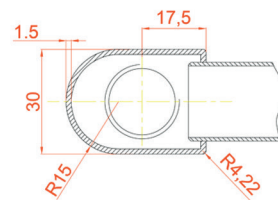
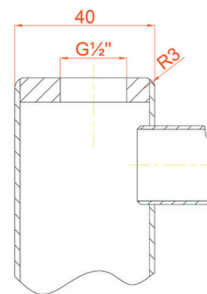
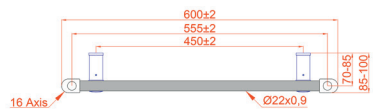
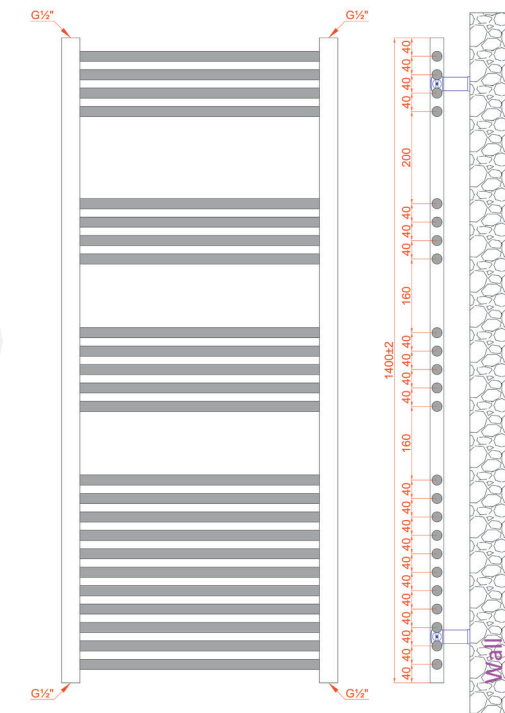
**1400x400MM**  
CONFIGURATION



**1400x500MM**  
CONFIGURATION



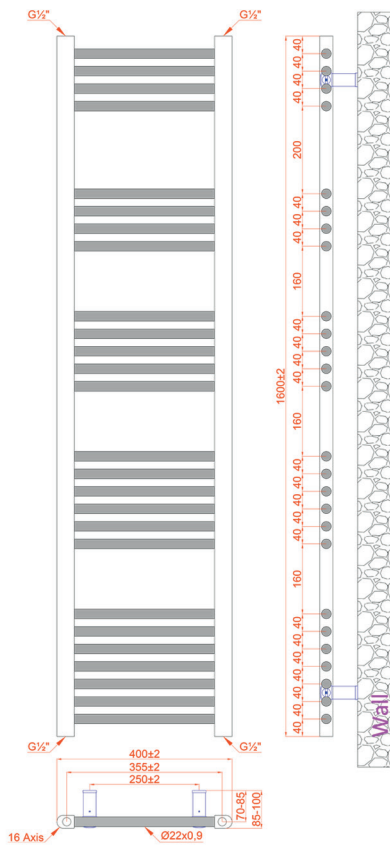
**1400x600MM**  
CONFIGURATION



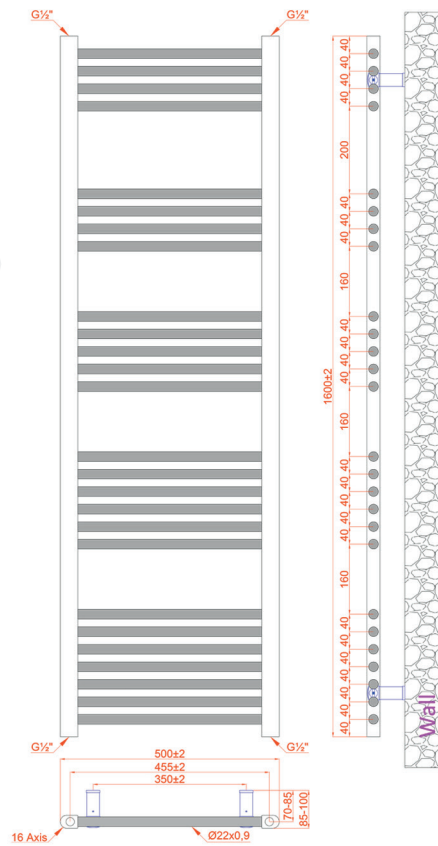
# TECHNICAL DIAGRAMS

## INDEPENDENT COLLECTION

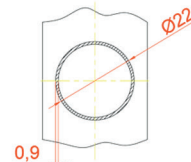
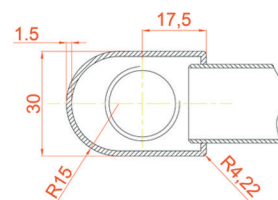
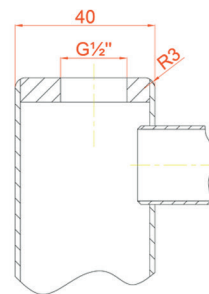
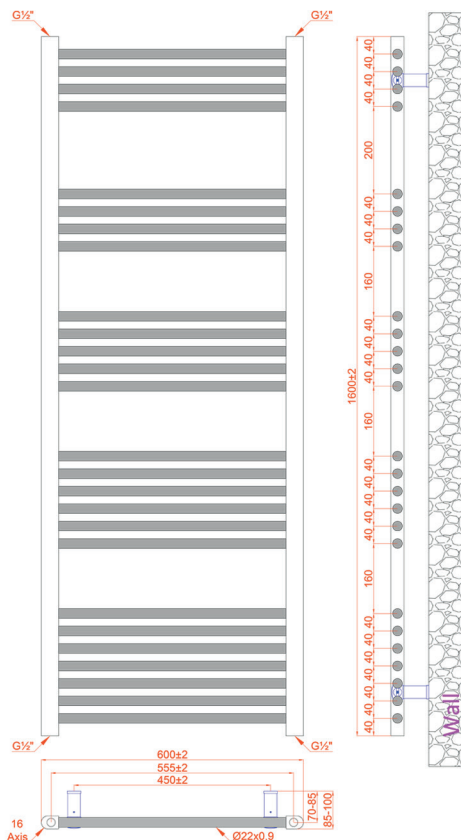
**1600x400MM**  
CONFIGURATION



**1600x500MM**  
CONFIGURATION



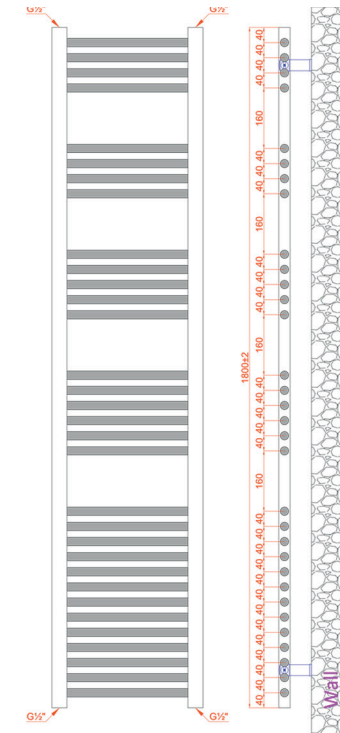
**1600x600MM**  
CONFIGURATION



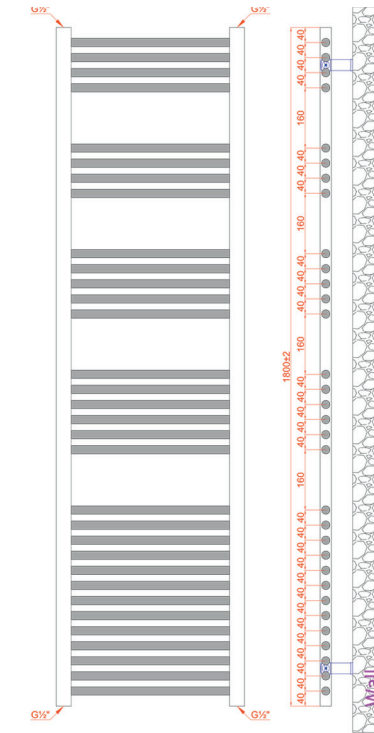
# TECHNICAL DIAGRAMS

## INDEPENDENT COLLECTION

**1800x400MM**  
CONFIGURATION



**1800x500MM**  
CONFIGURATION



**1800x600MM**  
CONFIGURATION

