

TOWELRADS PISA LADDER RANGE



High Heat Output achieved by using 25mm bars.

Versatile, can be used on central heating or dual fuel systems.

For the full and extensive range of towel rails, elements and accessories please visit our website at www.towelrads.com.

Curved options available in white and chrome variants.

Max Working Pressure: 10 bar

Max Working Temp: 110 degrees C



Manufacturers
Warranty



Available in Chrome
& White

FEATURES AND BENEFITS

- Classic ladder towel radiator for stylish, contemporary bathrooms
- Wide range of heights, widths and finishes available to suit any space
- 25mm bars give much better heat output than standard towel radiators with 19mm and 22mm tubes
- Curved towel radiators also available in this range
- An even higher output can be achieved by opting for one of our popular modern painted finishes
- Horizontal models also available to fit neatly under windows
- Can be connected to central heating or used with a dual fuel element for versatility
- Plenty of towel warming space

PISA WHITE CURVED

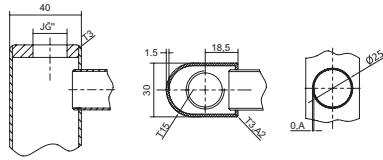
Height	Length	Product Code	Projection	Pipe Centres	Weight KG	Water Content L	Output at ΔT30k		Output at ΔT50k		DF Max Imm Rate	n EXPO-NENT
							Watts	BTU	Watts	BTU		
800	400	160017	65-88mm	355	6	3.95	177	603	343	1,170	200	1.22
	450	160018	65-88mm	405	6.7	4.31	199	678	386	1,317	200	1.22
	500	160019	65-88mm	455	7.1	4.67	221	754	429	1,464	300	1.22
	600	160020	65-88mm	555	7.9	5.39	265	905	515	1,757	200	1.22
1200	400	160021	65-88mm	355	9.3	5.59	255	870	495	1,689	300	1.23
	450	160022	65-88mm	405	8.95	6.07	286	977	556	1,897	400	1.23
	500	160023	65-88mm	455	9.95	6.56	318	1086	618	2,109	400	1.23
	600	160024	65-88mm	555	10.95	7.53	382	1304	742	2,532	400	1.23
1500	400	160025	65-88mm	355	10.4	7.15	322	1100	626	2,136	400	1.23
	450	160026	65-88mm	405	10.9	7.31	363	1239	705	2,406	400	1.23
	500	160027	65-88mm	455	12.5	7.98	403	1376	783	2,672	400	1.23
	600	160028	65-88mm	555	14.3	9.34	484	1652	940	3,207	600	1.22
1800	400	160029	65-88mm	355	13.6	8.72	393	1343	764	2,607	400	1.23
	450	160030	65-88mm	405	13.85	9.51	442	1509	859	2,931	600	1.23
	500	160031	65-88mm	455	14.1	10.29	491	1676	954	3,255	600	1.23
	600	160032	65-88mm	555	16.7	11.85	590	2012	1,145	3,907	800	1.23

PISA CHROME CURVED

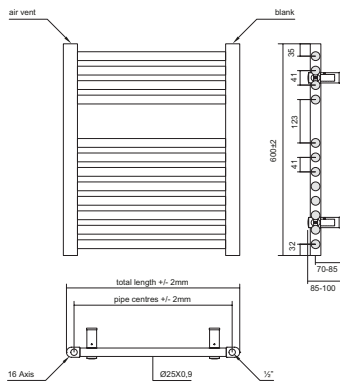
Height	Length	Product Code	Projection	Pipe Centres	Weight KG	Water Content L	Output at ΔT30k		Output at ΔT50k		DF Max Imm Rate	n EXPO-NENT
							Watts	BTU	Watts	BTU		
600	400	140036	65-88mm	355	4.4	2.86	94	320	182	621	200	1.20
	450	140037	65-88mm	405	4.85	3.12	106	360	205	699	200	1.20
	500	140038	65-88mm	455	5.8	3.37	117	401	228	778	200	1.21
	600	140039	65-88mm	555	6.4	3.88	141	479	273	931	200	1.22
800	400	140040	65-88mm	355	6	3.95	141	482	274	935	200	1.21
	450	140041	65-88mm	405	6.7	4.31	159	541	308	1,051	200	1.21
	500	140042	65-88mm	455	7.1	4.67	176	601	342	1,167	200	1.21
	600	140043	65-88mm	555	7.9	5.39	212	722	411	1,402	300	1.22
1000	400	140044	65-88mm	355	7.05	4.77	165	564	321	1,095	200	1.21
	500	140045	65-88mm	455	8.5	5.61	206	703	400	1,365	300	1.22
	600	140046	65-88mm	555	9.45	6.46	248	845	481	1,641	300	1.23
1200	400	140047	65-88mm	355	9.3	5.59	181	619	352	1,201	300	1.23
	450	140048	65-88mm	405	8.95	6.07	204	696	396	1,351	300	1.23
	500	140049	65-88mm	455	9.95	6.56	227	773	440	1,501	300	1.24
	600	140050	65-88mm	550	10.95	7.53	272	928	528	1,802	400	1.24
1400	400	140051	65-88mm	355	9.8	6.68	219	749	426	1,454	300	1.25
	450	140052	65-88mm	405	10.7	7.78	247	842	479	1,634	300	1.25
	500	140053	65-88mm	455	11.4	7.86	274	935	532	1,815	400	1.25
	600	140054	65-88mm	555	13.05	9.04	329	1,123	639	2,180	400	1.26
1600	400	140055	65-88mm	355	11.65	7.63	260	886	504	1,720	400	1.26
	450	140056	65-88mm	405	11.75	8.31	293	1,000	569	1,941	400	1.26
	500	140057	65-88mm	455	12.75	8.98	325	1,110	632	2,156	400	1.26
	600	140058	65-88mm	555	14.8	10.34	391	1,335	760	2,593	600	1.26
1800	400	140059	65-88mm	355	13.6	8.72	282	963	548	1,870	400	1.27
	450	140060	65-88mm	405	13.85	9.51	318	1,084	617	2,105	400	1.27
	500	140061	65-88mm	455	14.1	10.29	353	1,206	686	2,341	400	1.27
	600	140062	65-88mm	555	16.7	11.85	424	1,446	823	2,808	600	1.27

TECHNICAL DIAGRAMS

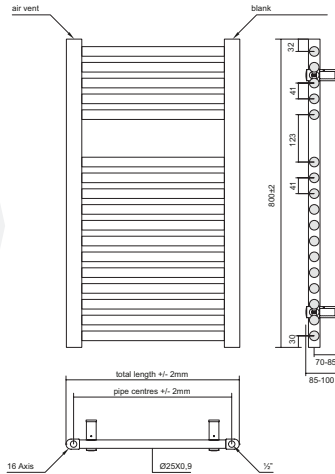
PISA LADDER COLLECTION



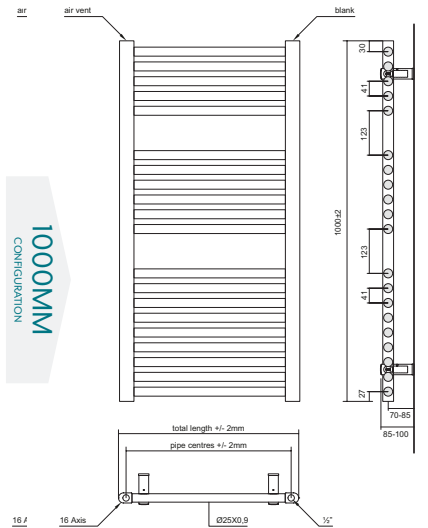
600MM
CONFIGURATION



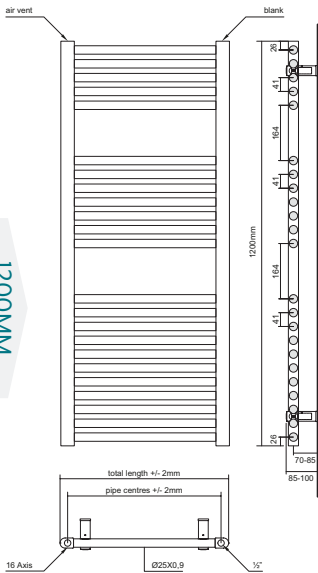
800MM
CONFIGURATION



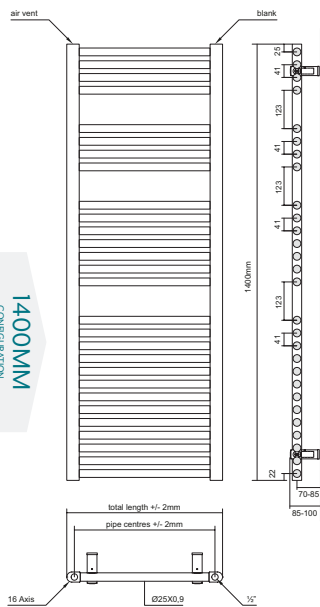
1000MM
CONFIGURATION



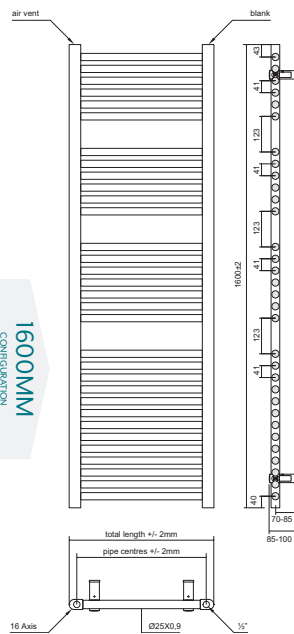
1200MM
CONFIGURATION



1400MM
CONFIGURATION



1600MM
CONFIGURATION



1800MM
CONFIGURATION

